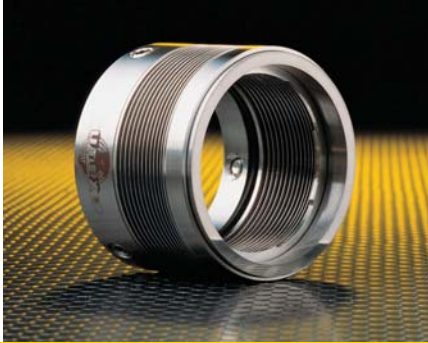




**UTEX INDUSTRIES, INC.**  
Mechanical Seal Division

# Component Seal Designs

## MB/MBH Seal



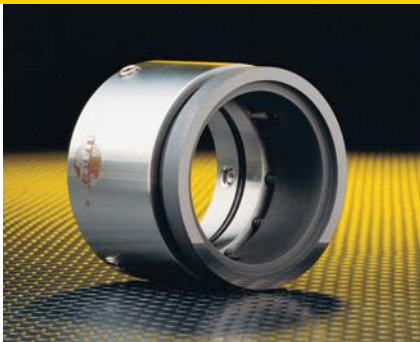
*The Utex MB/MBH metal bellows designs are well suited for chemical process and solids laden applications.*

## MBT™ Seal



*The Utex MBT™ is specifically designed for high temperature applications.*

## MP Seal



*The Utex MP is a multi-purpose design for applications ranging from clean oil to abrasive process liquids.*

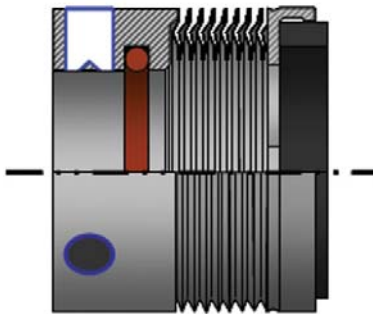
## CO Seal



*The Utex CO is an outside mounted design, highly suited for applications where process liquids and/or pump designs prohibit the use of an inside mounted seal.*

# Seal Features

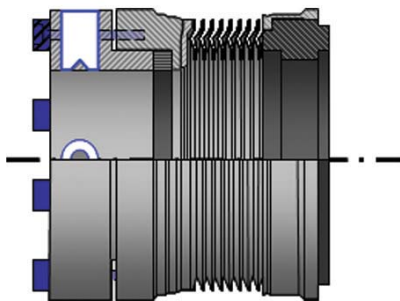
## MB/MBH Seal



### FEATURES:

- No dynamic o-rings
- Balanced design
- Nestled ripple bellows
- Hastelloy® C bellows
- All Hastelloy® C on MBH
- Pressures to 300 psi
- Shaft sizes from 1" to 4"

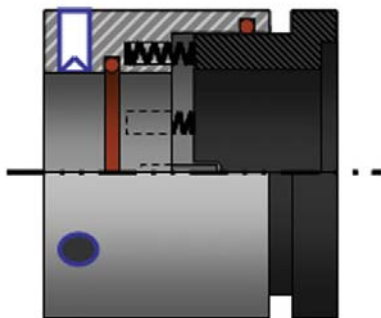
## MBT™ Seal



### FEATURES:

- Flexible graphite secondary seal
- Inconel® 718 bellows
- Alloy 42 front hub
- Blister resistant carbon
- Temperature to 800°F
- Pressures to 300 psi
- Shaft sizes from 3/4" to 4-1/8"

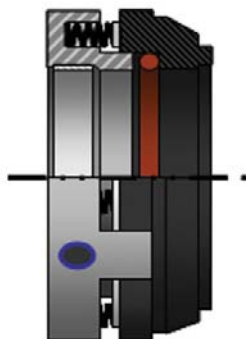
## MP Seal



### FEATURES:

- Balanced design
- Isolated springs
- No moving o-rings
- Slim-line design
- No shaft step required
- 0 to 450 psi\*
- Shaft sizes to 6"

## CO Seal



### FEATURES:

- Outside mounted
- Solid rotating face
- Split clamping ring
- Heavy lug drive
- Balanced to 150 psi
- Thick x-section face
- Shaft sizes 1" to 4"