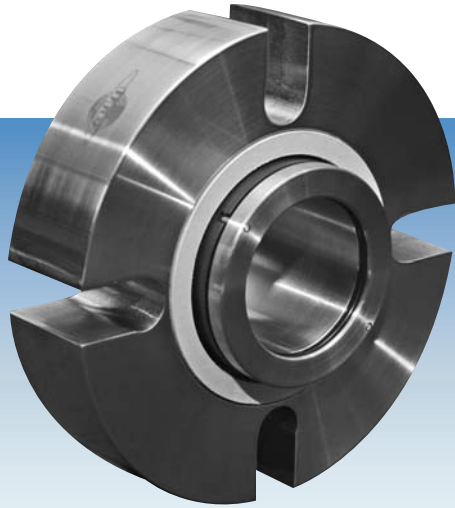




UTEX INDUSTRIES, INC.
Mechanical Seal Division

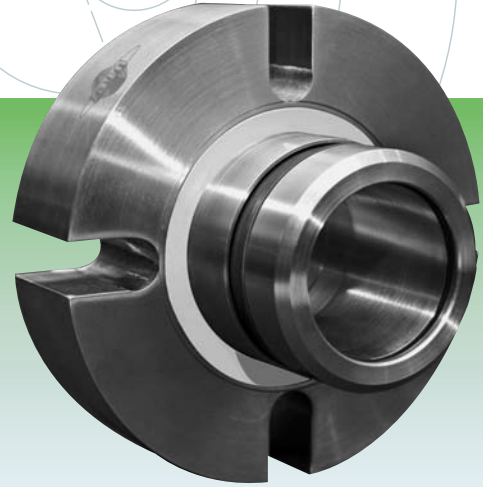
UVC™-I

Single Cartridge Seal

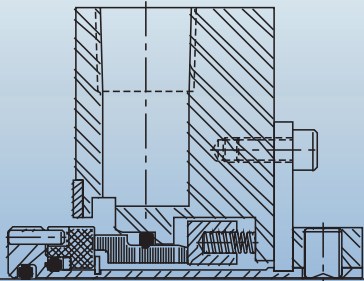


UVC™-II

Dual Cartridge Seal

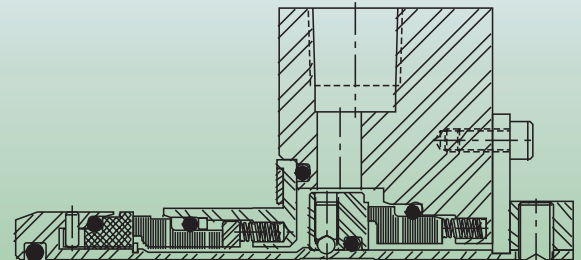


~ Engineered to Provide Value at an Economical Cost ~



Features:

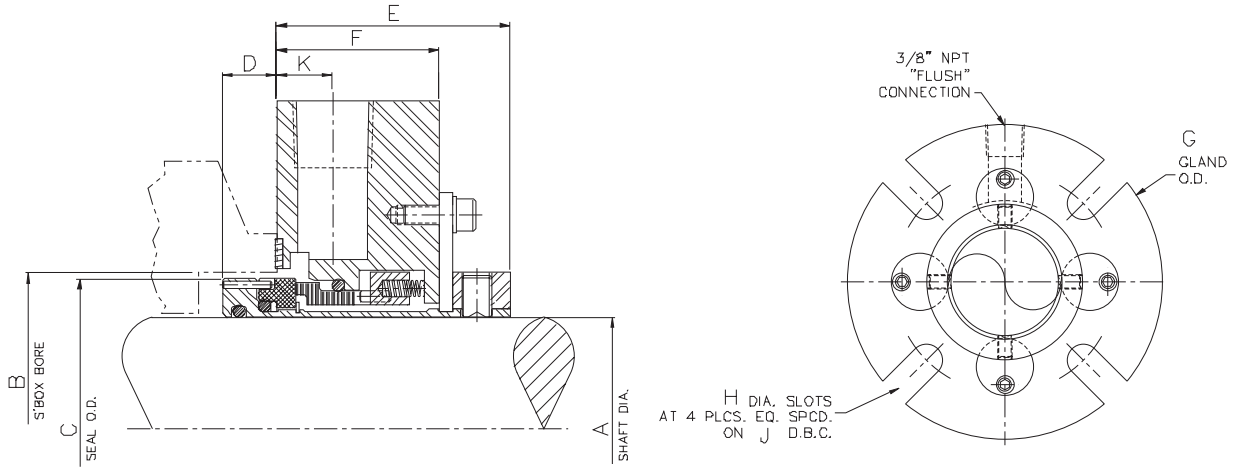
- Unitized cartridge assembly
- Self-aligning stationary design
- Balanced monolithic faces
- Silicon vs. Carbon faces standard
- Silicon vs. Silicon hard faces available
- Isolated Hastelloy® springs
- No stamped metal components
- Repeated repairability
- Repair kit available
- Recommended to 300 psi and 300° F
- Common ANSI & other popular sizes available



Features:

- Unitized cartridge assembly
- Self-aligning stationary design
- Pumping ring
- Double balanced monolithic faces
- True tandem configuration
- Inboard hard faces available
- No stamped metal components
- Repeated repairability
- Repair kit available
- Recommended to 300 psi and 300° F
- Common ANSI & other popular sizes available

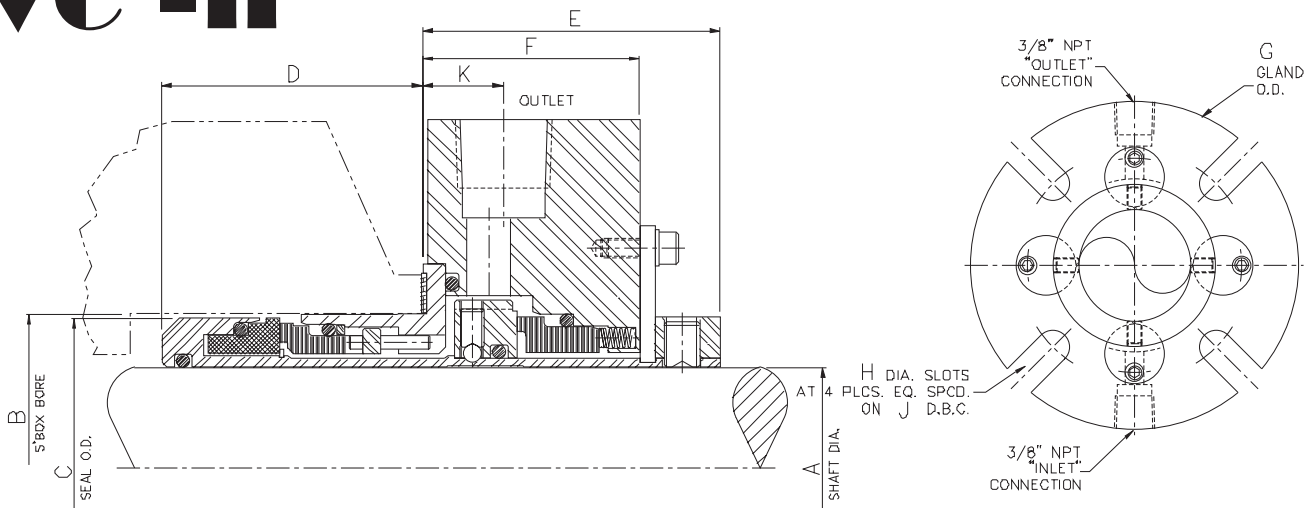
UVC™-I



A SEAL SIZE	B BOX BORE		C SEAL O.D.	D INBOARD LENGTH	E OUTBOARD LENGTH	F GLAND WIDTH	G GLAND O.D.	H SLOT WIDTH	J BOLT CIRCLE MIN. DIA.			K
	MIN.	MAX.							3/8"	1/2"	5/8"	
1.125	1.750	2.000	1.687	0.516	1.875	1.230	4.12	0.437	2.875			0.840
1.375*	2.000	2.250	1.937	0.516	1.875	1.230	4.18	0.437	3.125			0.840
1.500	2.250	2.500	2.187	0.453	1.937	1.330	4.50	0.562	3.375	3.500		0.470
1.750*	2.500	2.750	2.437	0.453	1.937	1.330	5.50	0.562	3.625	3.750		0.470
1.875*	2.625	2.875	2.562	0.453	1.937	1.330	5.50	0.562	3.750	3.875		0.470
2.125*	2.875	3.125	2.812	0.453	1.937	1.330	6.00	0.687	4.000	4.125	4.250	0.470
2.500*	3.250	3.500	3.187	0.453	1.937	1.330	6.50	0.687	4.375	4.500	4.625	0.470
2.750	3.750	4.250	3.625	0.875	2.406	1.780	7.75	0.687	5.250	5.375	5.500	0.590

* Contact Utex for dimensions on these available Big Bore sizes.

UVC™-II



A SEAL SIZE	B BOX BORE		C SEAL O.D.	D INBOARD LENGTH	E OUTBOARD LENGTH	F GLAND WIDTH	G GLAND O.D.	H SLOT WIDTH	J BOLT CIRCLE MIN. DIA.			K
	MIN.	MAX.							3/8"	1/2"	5/8"	
1.125	1.750	2.000	1.687	1.750	2.042	1.480	4.12	0.437	2.875			0.550
1.375*	2.000	2.250	1.937	1.750	2.042	1.480	4.18	0.437	3.125			0.660
1.750*	2.500	2.750	2.437	1.844	2.125	1.550	5.50	0.562	3.625	3.750		0.560
1.875*	2.625	2.875	2.562	1.844	2.125	1.550	5.50	0.562	3.750	3.875		0.560
2.125*	2.875	3.125	2.812	1.844	2.125	1.550	6.00	0.687	4.000	4.125	4.250	0.560
2.500*	3.250	3.500	3.187	1.844	2.406	1.780	6.50	0.687	4.375	4.500	4.625	0.560
2.750	3.750	4.250	3.625	2.187	2.406	1.780	7.75	0.687	5.250	5.375	5.500	0.690

* Contact Utex for dimensions on these available Big Bore sizes.